

effeff's electric strike



Electric Strike 118
Tiny, but highly effective



ASSA ABLOY, the global leader
in door opening solutions

effeff's multi-talented 118

Small and versatile all-rounder

A host of features for every requirement

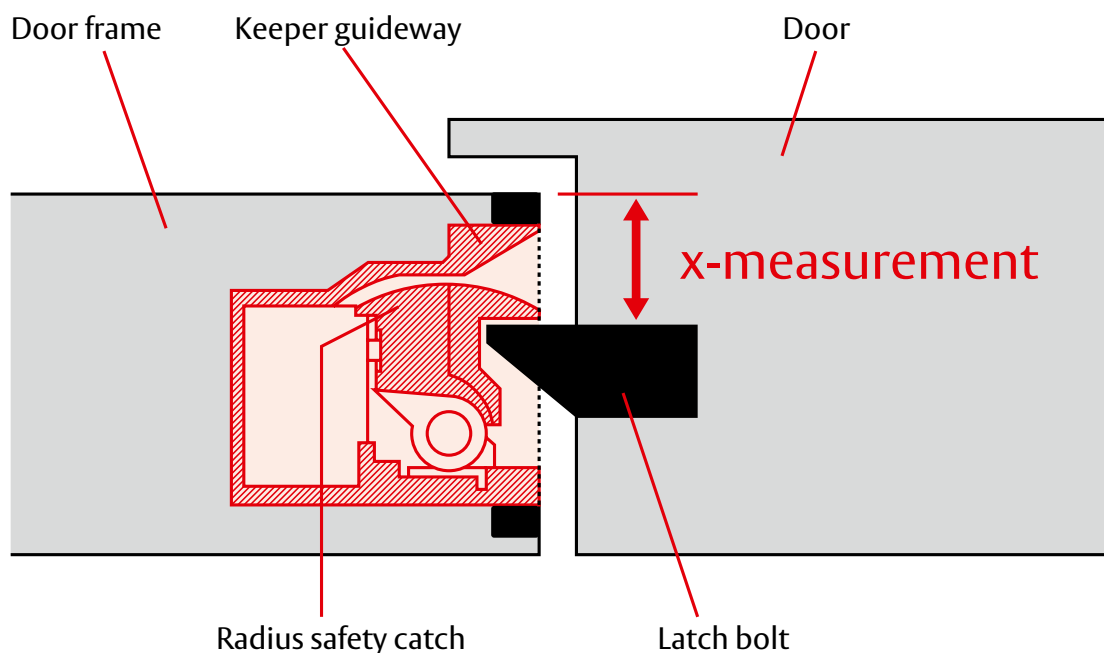
The smallest standard electric strike in the world is now also available as a ProFix design with 3 mm FaFix adjustment. The new smoke protection model 118S has also been released – the „S“ stands for smoke – a truly multi-talented device.

The strike's multi-voltage ranges lie between 10 – 24 V or 22 – 42 V and its compact fitting dimensions enable it to be installed even in the most confined of spaces. It can be installed in a wide range of door frames and on both single-leaf and double-leaf doors. Standard-compliant steel door frames can also be equipped with an electric strike from the 118 range on jambs greater than 30 mm.

The strike's radius safety catch means the catch is retracted into its casing when opened instead of swivelling outwards. This enables the customary recess for the catch in the frame to be reduced to a minimum; it can even be eliminated in the case of ProFix. ProFix can be used when the x measurement is 5 mm or greater.

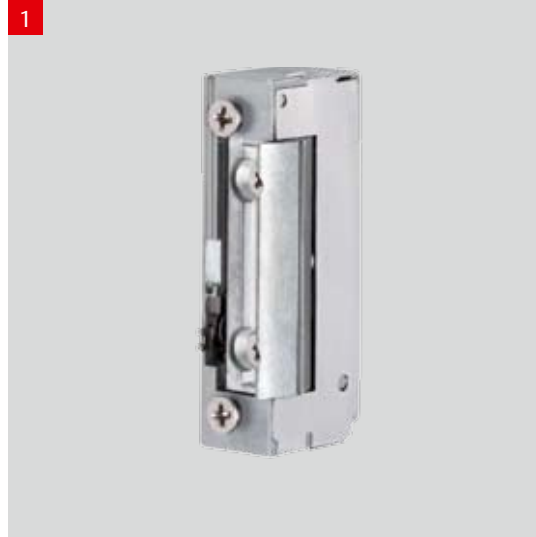
You can see the so-called x measurement in the diagram below.

The x measurement refers to the distance between the front of the door frame and the latch bolt or electric strike bolt



Standard Electric Strike 118

1 Model 118E



Minimum fitting dimensions - maximum effect effeff Standard Electric Strike 118

With its diminutive dimensions of 66 mm x 16 mm x 25.5 mm, effeff's Electric Strike 118 is the smallest electric strike in the world. Its intelligent features ensure the highest standards in planning reliability as well as quick and easy installation.

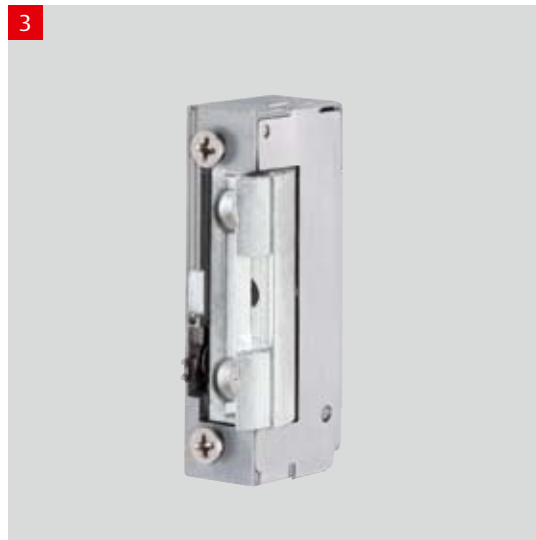
2 Model 118RRE



Overview of advantages

- Dimensions 25.5 x 16 x 66 mm, thus also suitable for standard-compliant steel doors
- Radius safety catch, FaFix, 3 mm adjustable
- Fail-unlocked current design available
- Optional monitoring contact, dimensions: 25.5 x 16 x 74 mm
- Optional hold-open function
- Universal voltage range 10-24 V AC/DC, resistance in continuous operation up to 13 V
- Universal voltage range 22-42 V AC/DC, resistance in continuous operation up to 26 V
- Model available with diode
- Replacement part with actuating lever available
- Plug-in connecting cable available
- Compatible with all standard mortise locks
- Compatible with springbolt bolts
- Compatible with all commercially available striking plates, also with striking plates for plastic profiles
- ProFix 2-compatible
- Endurance rating of 250,000 cycles
- Resistance to forced opening up to 3750 N
- Symmetric design, so can be used DIN left-hand or right-hand and horizontally

3 Model 118E130
for striking plates
with keeper slide



Technical Specifications for Model 118



Model 118 is an all-purpose electric strike. Its compact design enables it not only to open doors, but also offer potential for innovative use. There's no need to do without standard extras such as a monitoring contact, a hold-open function, an actuating lever and a diode. Both fail-locked and fail-unlocked current modes of operation are available. The universal voltage range makes it easy for you to select the voltage setting and also reduces time in storage. The optional plug-in connection cable means connecting up is child's play and the device takes even less time to fit.

Plug-in connection.
effeff standard connection with new integrated plug-in optional extra.

| Technical specifications | |
|---|--|
| Resistance to forced entry | 3750 N |
| Fitting dimensions | 66 x 16 x 25.5 mm |
| FaFix adjustment range (1 mm detent) | 3 mm |
| Meshing depth of latch | 5.5 mm |
| Preload unlocking for AC operation | 200 N |
| Universal voltage ranges | 10 V to 24 V AC/DC, eE function 11-13 V, 22 V to 42 V AC/DC, eE function 22-26 V |
| Ambient temperature range | -15 °C to +40 °C |
| Monitoring contact | optional |
| Switching capacity for monitoring contact | 24 V / 1 A |
| Installation dimensions with monitoring contact | 74 x 16 x 25.5 mm |
| Operable in all fitting positions | yes |
| Recovery diode | optional |
| Suitable for fire protection | no |
| Load cycles for in-plant endurance test | 250.000 |

| Electrical Specifications for Model 118 at 20° C | A71 10-24 V | B71 22-42 V | E91 12 V | F91 24 V |
|--|----------------|----------------|-------------|-------------|
| Rated operational voltage tolerance | — | — | +/- 10% | +/- 10% |
| Nominal resistance | 43 Ohm | 200 Ohm | 51 Ohm | 160 Ohm |
| Max. nominal power input | | | | |
| 12 V DC | 280 mA | — | 235 mA | — |
| 24 V DC | 560 mA | 120 mA | — | 150 mA |
| 12 V AC | 250 mA | — | — | — |
| 24 V AC | 500 mA | 60 mA | — | — |
| Mechanical Specifications for Model 118 | | | | |
| Preload AC operation | 200 N | 200 N | — | — |
| Preload DC operation | 50 N | 50 N | 30 N | 30 N |

Overview of most common models

| Order numbers | 10-24V AC/DC | 22-42V AC/DC | Pro- Fix2 | Fail-locked current | Fail-unlocked current | 12V DC | 24V DC | Unlocking lever | Recovery diode | Monitoring contact | Hold-open function | FAFIX +1/-2mm |
|-----------------|-----------------|-----------------|--------------|------------------------|--------------------------|-----------|-----------|--------------------|-------------------|-----------------------|-----------------------|------------------|
| 118-----A71 | . | | | . | | | | | | | | . |
| 118-----B71 | | . | | . | | | | | | | | . |
| 118E-----A71 | . | | | . | | | | . | | | | . |
| 118E-----B71 | | . | | . | | | | . | | | | . |
| 118RR-----A71 | . | | | . | | | | | | . | | . |
| 118RR-----B71 | | . | | . | | | | | | . | | . |
| 118RRE-----A71 | . | | | . | | | | . | | . | | . |
| 118RRE-----B71 | | . | | . | | | | . | | . | | . |
| 11805-----A71 | | | | . | | . | | | . | | | . |
| 11805-----B71 | | | | . | | | . | | . | | | . |
| 11805E-----A71 | | | | . | | . | | . | . | | | . |
| 11805E-----B71 | | | | . | | | . | . | . | | | . |
| 11805RR-----A71 | | | | . | | . | | | . | . | | . |
| 11805RR-----B71 | | | | . | | | . | | . | . | | . |
| 128-----A71 | . | | | . | | | | | | | . | . |
| 128-----B71 | | . | | . | | | | | | | . | . |
| 128E-----A71 | . | | | . | | | | . | | | . | . |
| 128E-----B71 | | . | | . | | | | . | | | . | . |
| 138-----E91 | | | | | . | . | | | | | | . |
| 138-----F91 | | | | | . | | . | | | | | . |
| 13805-----E91 | | | | | . | . | | | . | | | . |
| 13805-----F91 | | | | | . | | . | | . | | | . |
| 138RR-----E91 | | | | | . | . | | | | . | | . |
| 138RR-----F91 | | | | | . | | . | | | . | | . |
| 13805RR-----E91 | | | | | . | . | | | . | . | | . |
| 13805RR-----F91 | | | | | . | | . | | . | . | | . |
| 118.13-----A71 | . | | . | . | | | | | | | | . |
| 118.13-----B71 | | . | . | . | | | | | | | | . |
| 118E.13-----A71 | . | | . | . | | | | . | | | | . |
| 118E.13-----B71 | | . | . | . | | | | . | | | | . |
| 118.23-----A71 | . | | . | . | | | | | | . | | . |
| 118.23-----B71 | | . | . | . | | | | | | . | | . |
| 118E.23-----A71 | . | | . | . | | | | . | | . | | . |
| 118E.23-----B71 | | . | . | . | | | | . | | . | | . |
| 118.53-----A71 | | | . | . | | . | | | . | | | . |
| 118.53-----B71 | | | . | . | | | . | | . | | | . |
| 118E.53-----A71 | | | . | . | | . | | . | | | | . |
| 118E.53-----B71 | | | . | . | | | . | . | . | | | . |
| 118.63-----A71 | | | . | . | | . | | | . | . | | . |
| 118.63-----B71 | | | . | . | | | . | | . | . | | . |
| 128.13-----A71 | . | | . | . | | | | | | | . | . |
| 128.13-----B71 | | . | . | . | | | | | | | . | . |
| 128E.13-----A71 | . | | . | . | | | | . | | | . | . |
| 128E.13-----B71 | | . | . | . | | | | . | | | . | . |
| 138.13-----E91 | | | . | | . | . | | | | | | . |
| 138.13-----F91 | | | . | | . | | . | | | | | . |
| 138.23-----E91 | | | . | | . | . | | | | . | | . |
| 138.23-----F91 | | | . | | . | | . | | | . | | . |
| 138.53-----E91 | | | . | | . | . | | | . | | | . |
| 138.53-----F91 | | | . | | . | | . | | . | | | . |
| 138.63-----E91 | | | . | | . | . | | | . | . | | . |
| 138.63-----F91 | | | . | | . | | . | | . | . | | . |

Note: Other combinations possible, such as 128 with diode = 12805-----A71

118S – The world's smallest smoke protection electric strike



Model 118S complies with the legal requirements applicable since 2001 for tested and approved products for smoke protection doors.

General test certificate

Model 118S is a tested product. With Smoke Protection Test Certificate P-120001757, a door manufacturer can seek acceptance and approval for its smoke protection door without the need to test the electric strike and smoke protection door as a combined system.

1 Model 118S



Minimum fitting dimensions – maximum effect effeff Standard Electric Strike 118S

With its diminutive dimensions of 66 mm x 16 mm x 25.5 mm, effeff's Electric Strike 118 is the smallest smoke protection electric strike in the world. Its intelligent features ensure the highest standards in planning reliability as well as quick and easy installation.

2 Model 118SRR



Overview of advantages

- Dimensions 25.5 x 16 x 66 mm, thus also suitable for standard-compliant steel doors
- Radius safety catch, FaFix, 3 mm adjustable
- Optional monitoring contact, dimensions: 25.5 x 16 x 74 mm
- Universal voltage range 10-24 V AC/DC
- Universal voltage range 22-42 V AC/DC
- Model available with diode
- Plug-in connecting cable available
- Compatible with all standard mortise locks
- Compatible with springbolt bolts
- Compatible with all commercially available striking plates
- ProFix 2-compatible
- Endurance rating of 250.000 cycles
- Resistance to forced opening up to 3750 N
- Symmetric design, so can be used DIN left-hand or right-hand and horizontally

Technical Specifications for Model 118S



Plug-in connection.
effeff standard connection
with new integrated plug-
in optional extra.

Model 118S – a universal smoke protection electric strike

Its compact design enables it not only to open doors, but also offer potential for innovative use. It also includes standard extras such as a monitoring contact and a diode. The universal voltage range makes it easy for you to select the voltage setting and also reduces time in storage. The optional plug-in connection cable means connecting up is child's play and the device takes even less time to fit.

| Technical specifications | |
|---|---|
| Resistance to forced entry | 3750 N |
| Fitting dimensions | 66 x 16 x 25.5 mm |
| FaFix adjustment range (1 mm detent) | 3 mm |
| Meshing depth of latch | 5.5 mm |
| Preload unlocking for AC operation | 200 N |
| Universal voltage ranges | 10 V to 24 V AC/DC, eE function 11-13 V, 22 V to 42 V AC/DC, eE function 22-26 V |
| Ambient temperature range | -15 °C to +40 °C |
| Monitoring contact | optional |
| Switching capacity for monitoring contact | 24 V / 1 A |
| Installation dimensions with monitoring contact | 74 x 16 x 25.5 mm |
| Operable in all fitting positions | yes |
| Recovery diode | optional |
| Suitable for fire protection | no |
| Load cycles for in-plant endurance test | 250.000 |

| Electrical Specifications for Model 118 at 20° C | A71 10-24 V | B71 22-42 V | E91 12 V | F91 24 V |
|--|----------------|----------------|-------------|-------------|
| Rated operational voltage tolerance | — | — | +/- 10 % | +/- 10 % |
| Nominal resistance | 43 Ohm | 200 Ohm | 51 Ohm | 160 Ohm |
| Max. nominal power input | | | | |
| 12 V DC | 280 mA | — | 235 mA | — |
| 24 V DC | 560 mA | 120 mA | — | 150 mA |
| 12 V AC | 250 mA | — | — | — |
| 24 V AC | 500 mA | 60 mA | — | — |
| Mechanical Specifications for Model 118 | | | | |
| Preload AC operation | 200 N | 200 N | — | — |
| Preload DC operation | 50 N | 50 N | 30 N | 30 N |

Overview of most common models



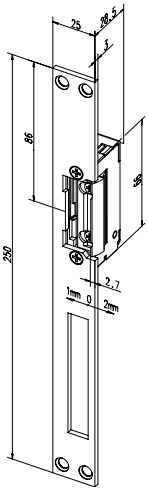
| Order numbers | 10-24V AC/DC | 22-42V AC/DC | Pro- Fix2 | Fail-locked current | 12V DC | 24V DC | Recovery diode | Monitoring contact | FAFIX +1/-2mm |
|-----------------|-----------------|-----------------|--------------|------------------------|-----------|-----------|-------------------|-----------------------|------------------|
| 118S-----A71 | • | | | • | | | | | • |
| 118S-----B71 | | • | | • | | | | | • |
| 118SRR-----A71 | • | | | • | | | | • | • |
| 118SRR-----B71 | | • | | • | | | | • | • |
| 118S05-----A71 | | | | • | • | | • | | • |
| 118S05-----B71 | | | | • | | • | • | | • |
| 118S05R-----A71 | | | | • | • | | • | • | • |
| 118S05R-----B71 | | | | • | | • | • | • | • |
| 118S.13-----A71 | • | | • | • | | | | | • |
| 118S.13-----B71 | | • | • | • | | | | | • |
| 118S.23-----A71 | • | | • | • | | | | • | • |
| 118S.23-----B71 | | • | • | • | | | | • | • |
| 118S.63-----A71 | | | • | • | • | | • | • | • |
| 118S.63-----B71 | | | • | • | | • | • | • | • |

Striking plate combinations

One electric strike –
a whole range of striking
plates

The Electric Strike 118 can be combined with a whole range of angled or flat striking plates.

- Narrow, angled striking plates: 042, 421, 502, 047 and 923
- iW angled strike plates: all established models
- Flat striking plate 22 mm wide: 434, 171, 445, 443, 444, 343, 356, 467
- Flat striking plate 23 mm wide: 855
- Compatible with all established KL, HZ and iW striking plates, as with model 19 and 119

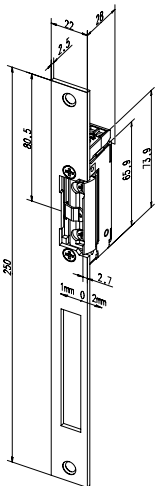


Door strike 118E with flat striking plate 021

| Technical specifications | |
|--------------------------|----|
| Colour | 35 |
| Type | HZ |

| DIN directions | |
|---------------------|------|
| Universal | 1 |
| Voltage | |
| 10-24 V AC/DC | A7 |
| 22-42 V AC/DC | B7 |
| Order no. | |
| 118E---02135 | ** * |

Order code for smoke protection models = 118S---02135 ***

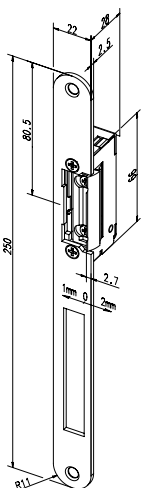


Door strike 118E with flat striking plate 434

| Technical specifications | |
|--------------------------|----|
| Colour | 35 |
| Type | HZ |

| DIN directions | |
|---------------------|------|
| Universal | 1 |
| Voltage | |
| 10-24 V AC/DC | A7 |
| 22-42 V AC/DC | B7 |
| Order no. | |
| 118E---43435 | ** * |

Order code for smoke protection models = 118S---43435 ***



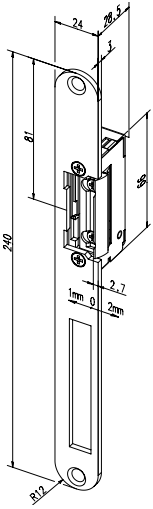
Door strike 118E with flat striking plate 171

| Technical specifications | |
|--------------------------|----|
| Colour | 35 |
| Type | HZ |

| DIN directions | |
|---------------------|------|
| Universal | 1 |
| Voltage | |
| 10-24 V AC/DC | A7 |
| 22-42 V AC/DC | B7 |
| Order no. | |
| 118E---17135 | ** * |

Order code for smoke protection models = 118S---17135 ***

Striking plate combinations



Door strike 118E with flat striking plate 174

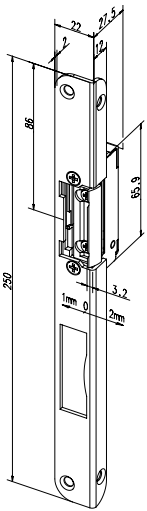
| Technical specifications | |
|--------------------------|----|
| Colour | 35 |
| Type | HZ |

| DIN directions | |
|----------------|---|
| Universal | 1 |

| Voltage | |
|---------------|----|
| 10-24 V AC/DC | A7 |
| 22-42 V AC/DC | B7 |

| Order no. | |
|----------------|-------------------|
| 118E--- | 17435 ** * |

Order code for smoke protection models = 118S---17435 ***



Door strike 118E with angled striking plate 513

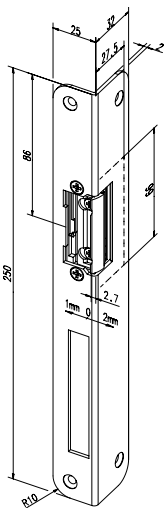
| Technical specifications | |
|--------------------------|----|
| Colour | 35 |
| Type | iW |

| DIN directions | |
|----------------|---|
| Left-hand | 4 |
| Right-hand | 5 |

| Voltage | |
|---------------|----|
| 10-24 V AC/DC | A7 |
| 22-42 V AC/DC | B7 |

| Order no. | |
|----------------|-------------------|
| 118E--- | 51335 ** * |

Order code for smoke protection models = 118S---51335 ***



Door strike 118E with angled striking plate 324

| Technical specifications | |
|--------------------------|----|
| Colour | 35 |
| Type | iW |

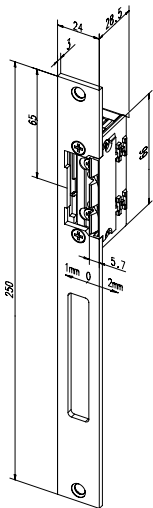
| DIN directions | |
|----------------|---|
| Left-hand | 4 |
| Right-hand | 5 |

| Voltage | |
|---------------|----|
| 10-24 V AC/DC | A7 |
| 22-42 V AC/DC | B7 |

| Order no. | |
|----------------|-------------------|
| 118E--- | 32435 ** * |

Order code for smoke protection models = 118S---32435 ***

Striking plate combinations for the ProFix 2 model



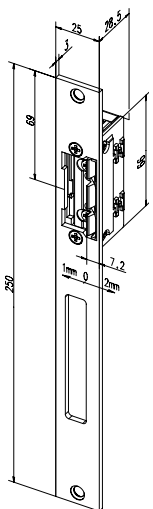
Door strike 118.13 with flat striking plate 690

| Technical specifications | |
|--------------------------|----|
| Colour | 35 |
| Type | HZ |

| DIN directions | |
|---------------------|------|
| Universal | 1 |
| Voltage | |
| 10-24 V AC/DC | A7 |
| 22-42 V AC/DC | B7 |
| Order no. | |
| 118.13-69035 | ** * |

Order code for smoke protection models = 118S.1369035 ***

Order code for model with striking plate
set up ready for bolt switch contact = 118.13-71135 ***



Door strike 118.13 with flat striking plate 691

| Technical specifications | |
|--------------------------|----|
| Colour | 35 |
| Type | HZ |

| DIN directions | |
|---------------------|------|
| Universal | 1 |
| Voltage | |
| 10-24 V AC/DC | A7 |
| 22-42 V AC/DC | B7 |
| Order no. | |
| 118.13-69135 | ** * |

Order code for smoke protection models = 118S.1369135 ***

Order code for model with striking plate
set up ready for bolt switch contact = 118.13-71235***

General technical information for model series 118 / 118S

Power-on time in % power on/min

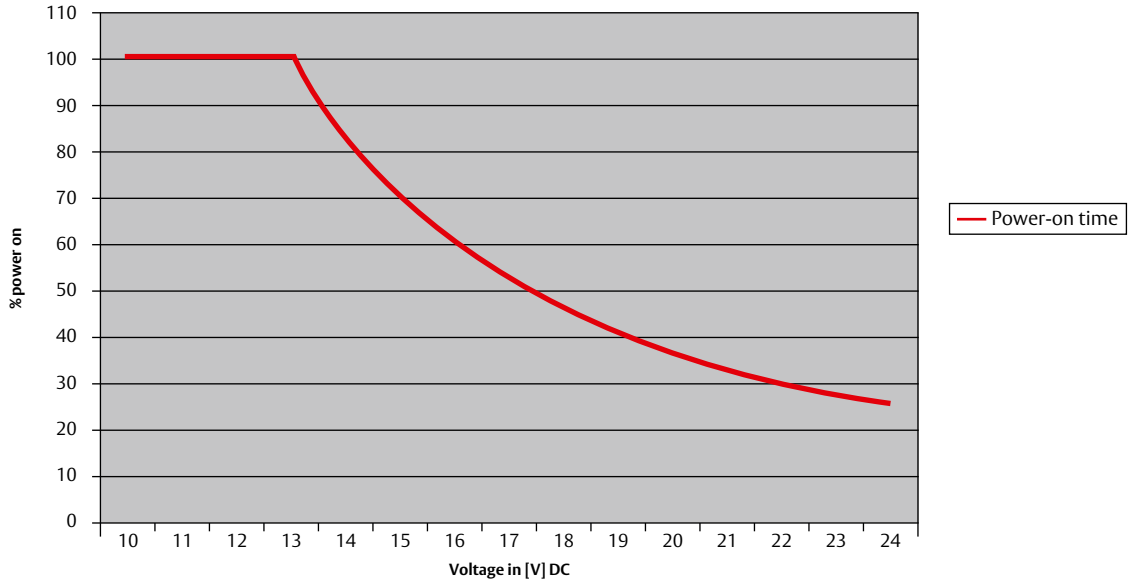


Diagram shows relative power-on time for
A71 models (10-24 V AC/DC)

Example

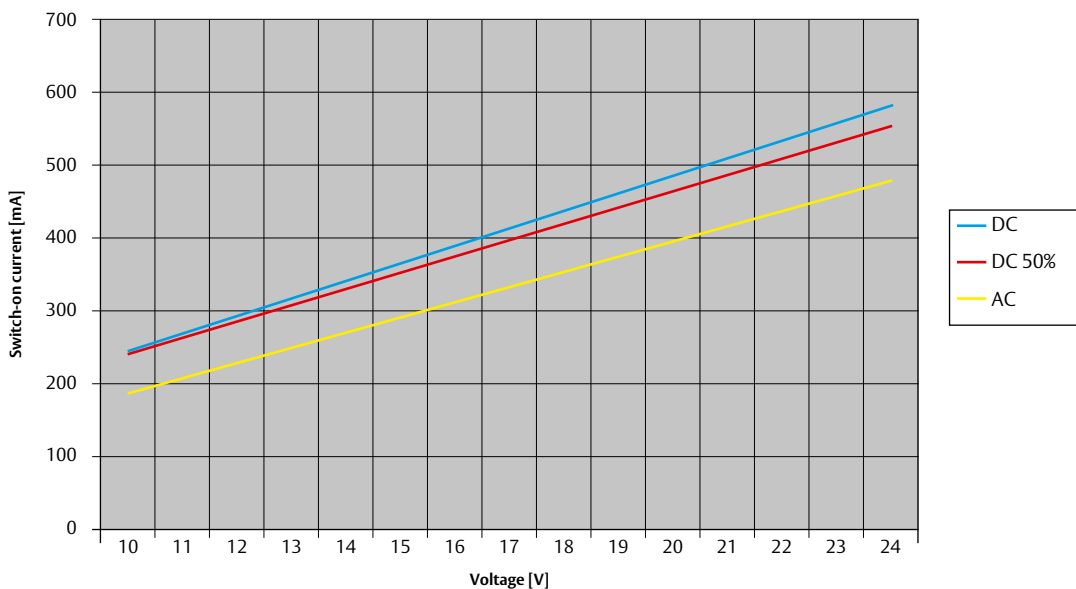
100 % power-on time is guaranteed up to a voltage of 13 V. This means the electric strike can be continually energised without it overheating.

If Electric Strike 118E-----A71 is operated at 24 V, the power-on time falls to 25 %.

This corresponds to a maximum pulse frequency of 15 seconds continual energising followed by a break of 45 seconds. The electric strike can then be energised again

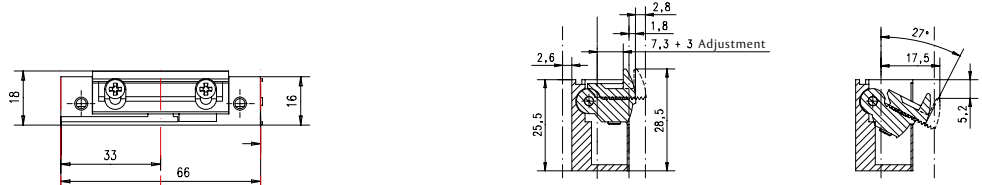
after 15 seconds. Switch-on currents can be taken from the graph below. Operating with an alternating current (AC) requires lower switch-on currents than a direct current (DC). „DC 50 %“ is a direct current with 50 % ripple.

Switch-on current for AC and DC feeding voltage

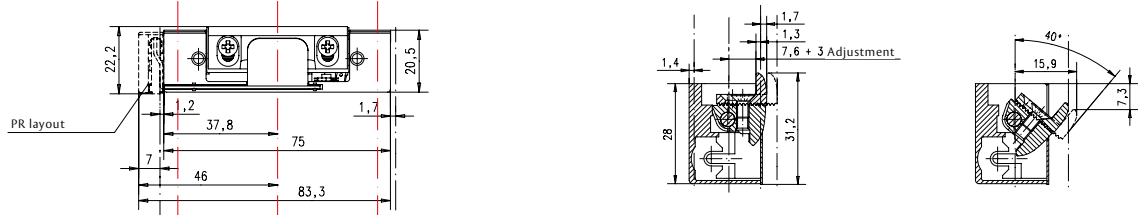


Comparison of model designs

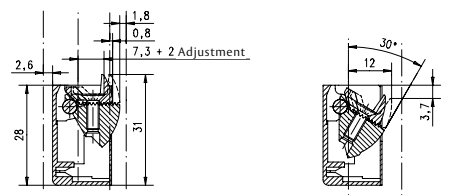
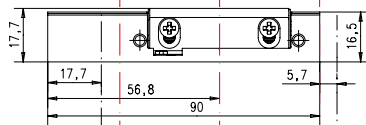
Model 118



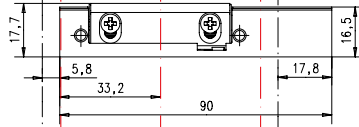
Model 17
Model 17 RR



Model 119 DL



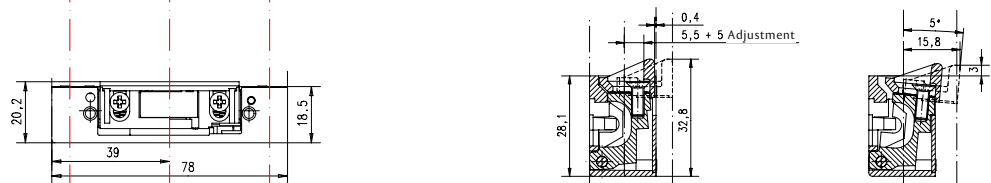
Model 119 DR



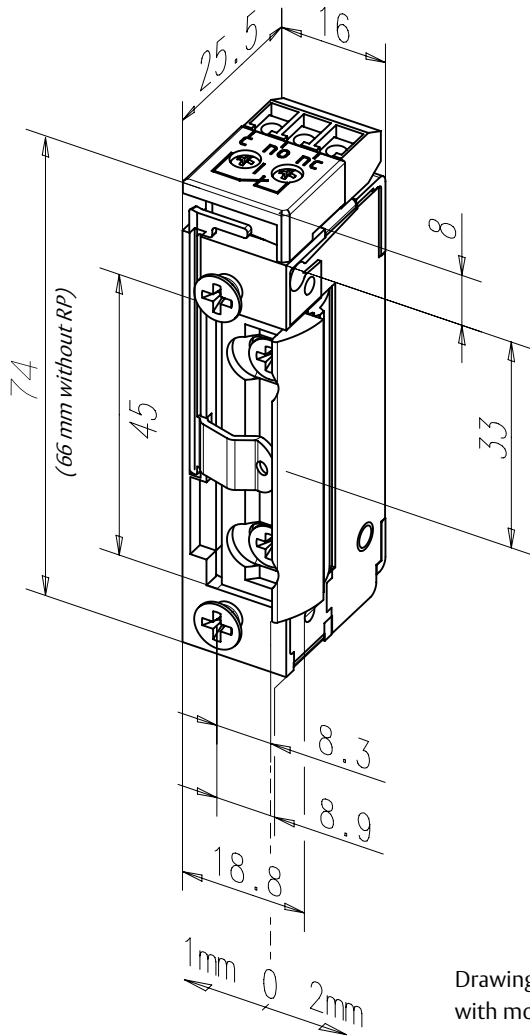
Model 116
Model 116 RR



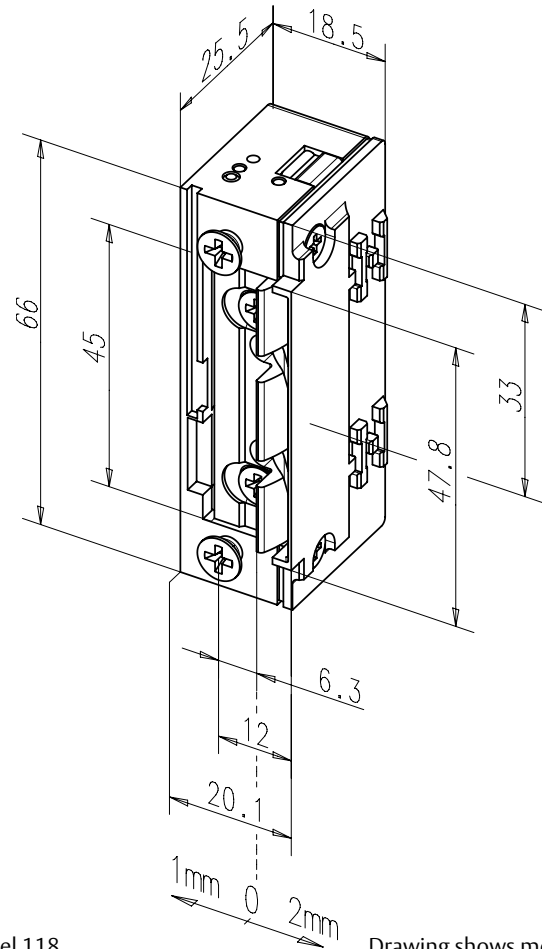
Model LT611



Dimensional drawings



Drawing shows model 118
with monitoring



Drawing shows model
118.13 ProFix 2



Plug-in connecting cable

Length: 150 cm

Length: 250 cm

Length: 450 cm

Order no.

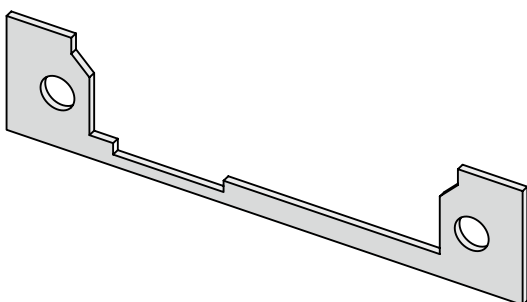
760-150-----00

Order no.

760-250-----00

Order no.

760-450-----00



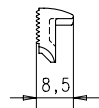
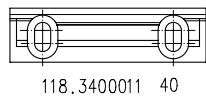
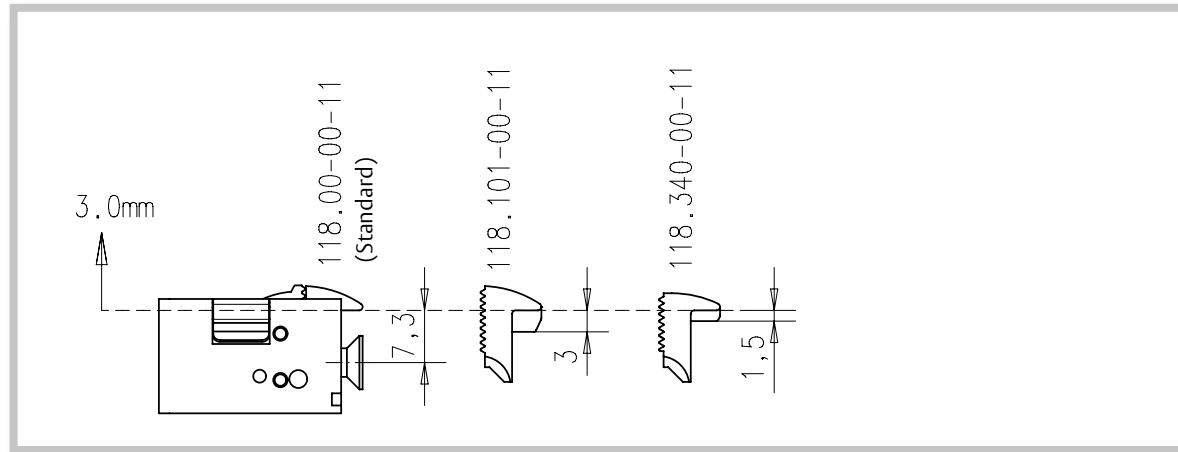
Intermediate piece

1 mm thick,
for striking plates
finer than 2.5 mm

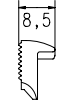
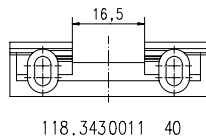
Order no.

118.700054 35

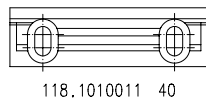
Screw-on pieces for models 118 and 118S



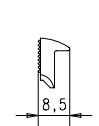
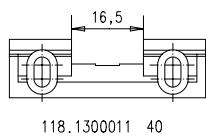
$x = 5,8 + 3 \text{ mm}$



$x = 5,8 + 3 \text{ mm}$



$x = 4,3 + 3 \text{ mm}$



$x = 7,3 + 3 \text{ mm}$

ASSA ABLOY is the global leader in door opening solutions, dedicated to satisfying end-user needs for security, safety and convenience.



Originally part of the ZEISS IKON AG company founded in 1926, **IKON** is ASSA ABLOY's most successful brand for locking and security technology in Germany. The IKON brand produces state-of-the-art products and solutions at the cutting edge of technology. The brand product range includes high-quality mechanical and mechatronic locking cylinders, auxiliary locks and security devices, door fittings and door closers. IKON products provide active burglary protection and safeguard both people and property.



Founded as a precision engineering and electrical engineering workshop in 1936, **effeff** is a global leading brand for electromechanical locking and unlocking devices. Electric strikes, electric dead bolts, security locks, access control systems and escape route technology are amongst the effeff brand products which today provide security and convenience in over 75 countries throughout the world.

ASSA ABLOY Sicherheitstechnik GmbH is the world's top professional partner in mechanical and electromechanical security solutions for safety, security and convenience in buildings. The company develops, produces and markets high-quality products and multi-purpose systems under the established IKON and effeff brand names for the private, commercial and public sectors.

ASSA ABLOY is the world's leading manufacturer and supplier of door opening solutions, meeting tough end-user demands for safety, security and convenience. With over 32,000 employees, the Group achieves sales of over 3.5 billion Euros every year.

We reserve the right to make technical modifications. 2.1901-104 000 00

ASSA ABLOY
Sicherheitstechnik GmbH
Bildstockstraße 20
72458 Albstadt
albstadt@assaabloy.de
Tel. +497431 123-700
Fax +497431 123-258
www.assaabloy.de