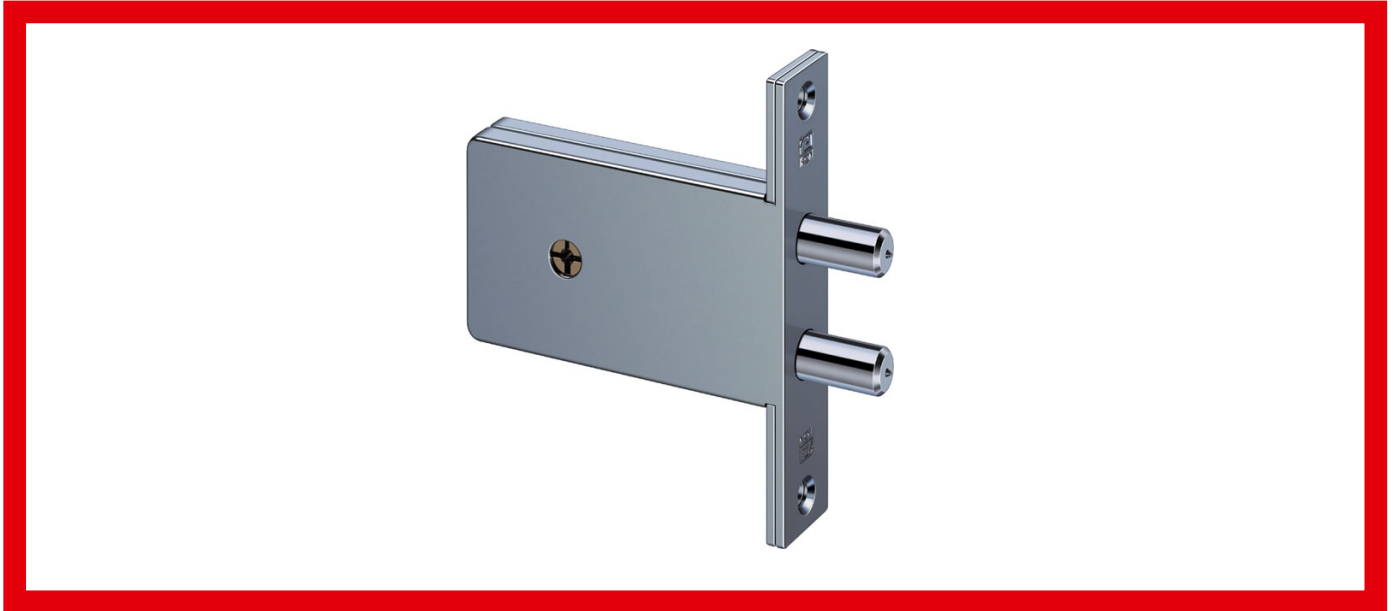


# 3211 Mortise bolt lock

Locks and locking systems with cross profile

Mortise lock with cross profile

## 6-pin cross profile security lock



As variants of IKON pin cylinder systems, cross profiles provide security in the smallest of spaces. Rows of pins on three corresponding sides with minimal installation dimensions provide effective protection against manipulation. Cross profile locks are also available on request with a special paracentric profile. Suitable keys for concealed installation are available in different lengths from IKON.

### Area of Application

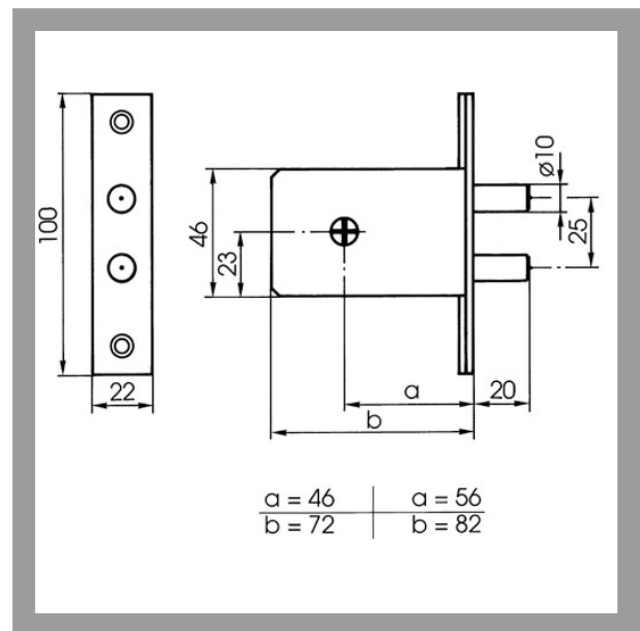
This lock fits unobtrusively into every entrance door. Except for the key hole and escutcheon which can be seen on both sides of the door the mortise lock is invisible, as it is embedded in the door leaf. Two solid hardened 10mm thick steel bolts mean that the IKON mortise lock provides a high degree of security. The bolts project 20mm into the strike plate embedded into the door frame thus providing enhanced security against intrusion. To meet increased security requirements, we recommend that a mortise lock is fitted to both upper and lower part of the door and that they are co-ordinated to lock simultaneously.

**IKON**  
**ASSA ABLOY**

ASSA ABLOY, the global leader  
in door opening solutions

# 3211 Mortise bolt lock

## 6-pin cross profile security lock



### Product description

- Locks with different keys available
- Suitable for DIN right and left
- Key withdrawal in open and closed position
- With special paracentric profile (PR=SE1K) and drilling protection
- 2 Single-throw bolts, 20mm projection, galvanised steel, 10mm diameter
- Lock case completely closed
- Galvanised lock case, face plate and strike plate
- Available with different face plate widths (STU=) 18, 22 mm
- Available with different backsets (STU=) 46, 56 mm
- Available as S2 profile with standard locking and SE1K profile with restricted locking with security card
- Cross profile keys are available in different lengths (SSL=) from 70mm to 130mm

### Accessories/Individual parts

- Cross profile key blank S100,SYS=KR

### Compatible ASSA ABLOY products

- Rain protection flap for cross profile security locks 1291
- Escutcheon for cross profile security locks 1292
- Maintenance spray 8511

### Scope of delivery

- 1 mortise bolt lock
- 1 strike plate
- 2 escutcheons
- 3 cross profile keys - length 70mm (A)



# 3211 Mortise bolt lock

6-pin cross profile security lock

Article-No.	DOR=	STU=	PR=
<b>3211</b>	46	18	S2
	46	22	S2
	56	18	S2
	56	22	S2
	46	18	SE1K
	46	22	SE1K
	56	18	SE1K
	56	22	SE1K

ASSA ABLOY  
Sicherheitstechnik GmbH  
Goerzallee 299  
14167 Berlin  
berlin@assaabloy.de  
Tel. +4930 8106-0  
Fax +4930 8106-26 00  
www.assaabloy.de



ASSA ABLOY, the global leader  
in door opening solutions