

HHM Series

HOUSING MOUNT ADAPTERS

The Honeywell HHM Series housing mount adapters are designed to mount the HHMW13 Wall Mount for the HHC12 environmental camera housings to corners and poles. The adapters can support up to 63.5 lb (25 kg) and are constructed of die-cast aluminum with an epoxy powder coating, making them corrosion resistant.

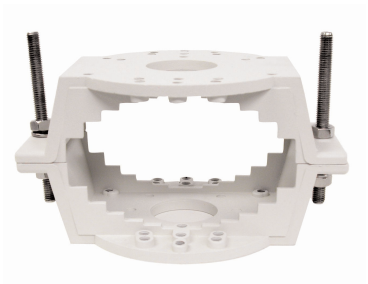
The HHMW13 wall mount features an integrated ball joint that allows easy positioning of the HHC12 environmental housing. The HHMW13 can be mounted to a standard pole using the HHMPMA pole mount adapter or mounted to the outside corner of a building using the HHMCMA corner mount adapter.

Market Opportunities

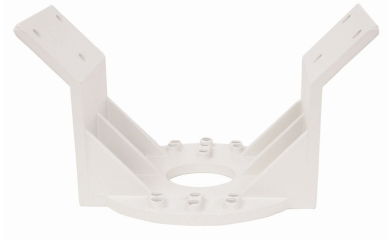
The Honeywell HHM Series of camera mount adapters are designed for mounting the HHC12 Series of environmental housing mounts to corners of buildings or freestanding poles. These adapters can be used indoors and outdoors and are suitable for a variety of applications such as parking lots, building perimeter surveillance, entranceways, and driveways.

Features

- Die-cast and aluminum construction
- Epoxy powder coated finish for corrosion resistance
- Easy to install
- Maximum load 63.5 lb (25 kg)
- Contemporary design
- Low cost



HHMPMA
Pole Mount Adapter



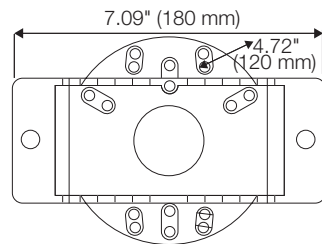
HHMCMA
Corner Mount Adapter

SPECIFICATIONS

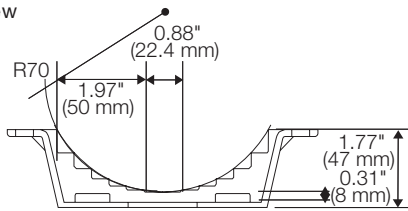
Mechanical	HHMPMA
Dimension	See diagrams
Weight	1.64 lb (0.75 kg)
Maximum Load	63.5 lb (25 kg)
Construction	Mount: Die-cast and aluminum Finish: Light gray, polyester powder coating
Enclosure Mounting	Ten (10) M16 x 15 mm hex head machine screws (supplied) Two (2) M10 x 90 mm hex head machine screws (supplied) Two (2) M10 hex nut (supplied)

Mechanical	HHMPMA
Dimension	See diagrams
Weight	.098 lb (0.45 kg)
Maximum Load	63.5 lb (25 kg)
Construction	Mount: Die-cast and aluminum Finish: Light gray, polyester powder coating
Enclosure Mounting	Ten (10) M16 x 15 mm hex head machine screws (supplied)

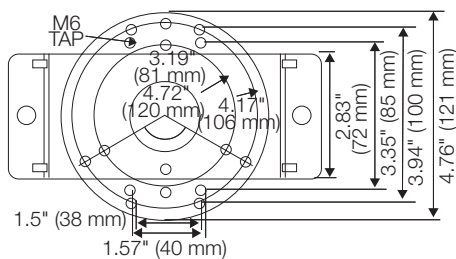
Top View



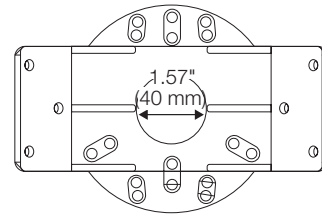
Side View



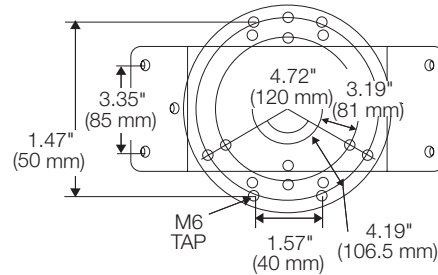
Bottom View



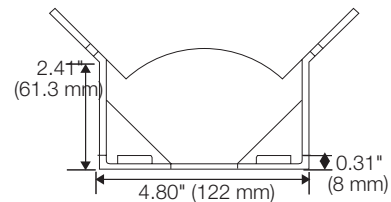
Top View



Bottom View



Side View



Ordering	
HHMPMA	Pole Mount Adapter for the HHMW13 Wall Mount
HHMCMA	Corner Mount Adapter for the HHMW13 Wall Mount

NOTE: Honeywell reserves the right, without notification, to make changes in product design or specifications.

Honeywell Security

Honeywell Video Systems
2700 Blankenbaker Pkwy, Suite 150
Louisville, KY 40299
1.800.796.CCTV
www.honeywell.com

L/HHMADPD/D
May 2007
© 2007 Honeywell International, Inc.

Honeywell