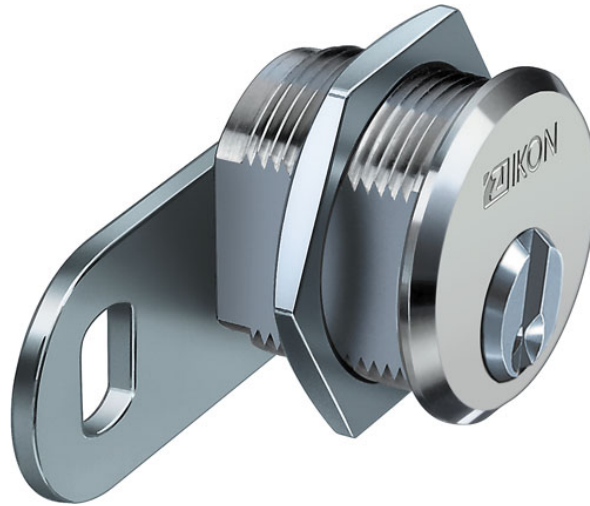


P030 Locking lever cylinder - system P0

30mm diameter, laterally flattened to 22mm

Mechanical locking cylinders

Locking lever cylinder



Locking cylinders form the core element of secure locking systems and represent IKON's core competency. The product range meets challenging security requirements with sophisticated solutions. High-quality IKON locking cylinders provide high protection against intruders. Standard equipment in this respect includes anti-drilling devices, security cards and panic functions. Patented profiles are a direct result of decades of experience gained in precision engineering and are effectively equipped against even the latest intrusion or burglary techniques. These features include innovative VECTOR profiles and the IKON reversible key profile WSW-W10.

Area of Application

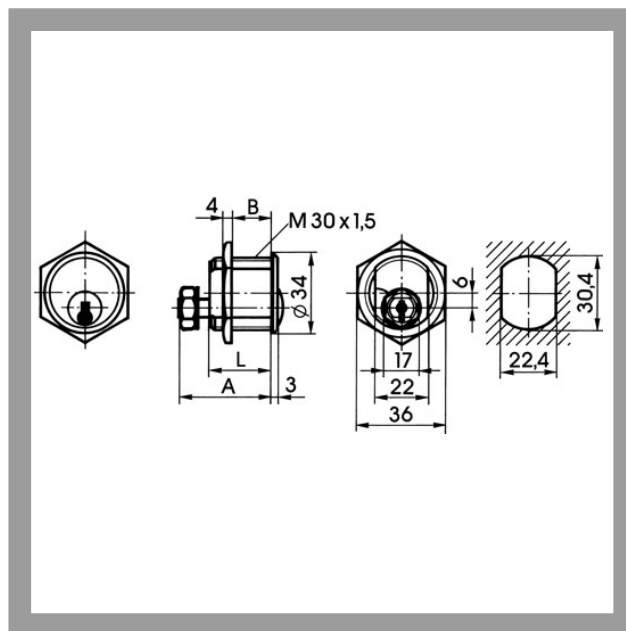
Locking lever cylinders are mainly used for letterboxes, vending machines, control cabinets, haunch flaps, wardrobe lockers or security lockers. IKON supplies locking lever variants to suit different areas of application.

IKON
ASSA ABLOY

ASSA ABLOY, the global leader
in door opening solutions

P030 Locking lever cylinder - system P0

30mm diameter, laterally flattened to 22mm



Product description

- 5 pin tumblers
- Brass cylinder
- Standard finish, matt chrome-plated (OF=MC)
- Other surfaces: satin nickel-plated (OF=MV), brass, mat brushed (OF=MG), polished brass (OF=MP)
- Not available with drilling protection (AB=2)
- Dimensions in mm A,L,B 34,24,17
- Standard locking lever (SLHB=1645009)
- Locking path and locking lever path 90° left or right
- Key withdrawal when locking lever is closed
- Available for individual lockings and locking systems
- Available for individual locking with standard locking (AA=NML), without security card
- Drilling protection (AB=), security card depending on profile (PR=)
- Key with square metal head
- Tapered cylinder core head with reinforced key guide
- Core pins made of special wear-resistant bronze
- Fixing with M30x1.5 housing nut
- Locking direction of locking lever must be specified when ordering

Accessories/Individual parts

- Shim (gap filler) 1901,VAR=0160508
- Shim (gap filler) 1901,VAR=0160501
- Shim (gap filler) 1901,VAR=0160503
- Shim (gap filler) 1901,VAR=0160510
- Ring nut 1903,VAR=1656002

Compatible ASSA ABLOY products

- Escutcheon with rain protection cover 1254,AUS=1
- Maintenance spray 8511

Scope of delivery

- 1 locking lever cylinder
- 2 nickel silver keys
- 1 housing nut M30 x 1.5

ZIKON
ASSA ABLOY

P030 Locking lever cylinder - system P0

30mm diameter, laterally flattened to
22mm

Current profiles for individual locking

Profile (PR=)	Standard profile N1.	Standard profile AEP10
Profile version	70	71
With security card	No	Yes
included		
Drilling protection (AB=)	optional	0+1
Emergency device (GE=)	optional	optional
Locking wave (SW=)	-	-
VdS class	-	-
RAL quality symbol	-	-
DIN class	-	-
Modular system (GBK=)	-	-
Additional lateral pins	-	-
Factory-keyed profile/Client profile	Factory-keyed profile	Factory-keyed profile
Key head shape	Square	Square



ASSA ABLOY
Sicherheitstechnik GmbH
Goerzallee 299
14167 Berlin
berlin@assaabloy.de
Tel. +4930 8106-0
Fax +4930 8106-26 00
www.assaabloy.de

ASSA ABLOY, the global leader
in door opening solutions