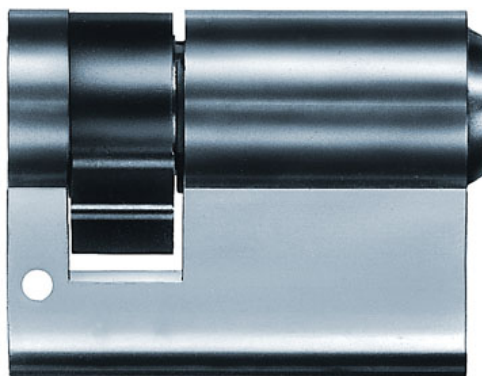


# P040 Switching cylinder - system P0

Mechanical locking cylinders

Switching cylinder



Locking cylinders form the core element of secure locking systems and represent IKON's core competency. The product range meets challenging security requirements with sophisticated solutions. High-quality IKON locking cylinders provide high protection against intruders. Standard equipment in this respect includes anti-drilling devices, security cards and panic functions. Patented profiles are a direct result of decades of experience gained in precision engineering and are effectively equipped against even the latest intrusion or burglary techniques. These features include innovative VECTOR profiles and the IKON reversible key profile WSW-W10.

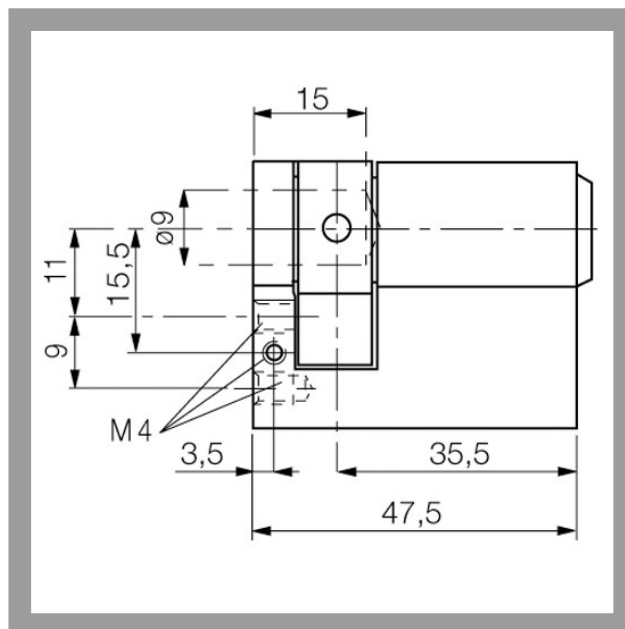
## Area of Application

Switching cylinders are mainly used for electrical equipment, switching systems or lift controls. IKON supplies different switch cylinder versions to suit various areas of application.


ASSA ABLOY, the global leader  
in door opening solutions

# P040 Switching cylinder - system P0



## Product description

- 5 pin tumblers
- Brass cylinder
- Standard finish, satin nickel-plated (OF=MV)
- Other surfaces: brass, mat brushed (OF=MG), polished brass (OF=MP)
- Available only in standard length 35 mm
- 2 M4 threads at rear, one M4 thread on side for fixing
- Cam radius 17 mm
- Cam position vertical downwards
- Available for individual lockings and locking systems
- Key with square metal head
- Tapered cylinder core head with reinforced key guide
- Cam made of break and corrosion-resistant sinter metal
- Core pins made of special wear-resistant bronze

## Compatible ASSA ABLOY products

- Maintenance spray 8511

## Scope of delivery

- 1 switching cylinder
- 2 nickel silver keys
- 1 earthing screw M4 (not embodied in P040, P540, P640)
- 2 threaded screws M4 (not embodied in P040, P540, P640)



# P040 Switching cylinder - system P0

## Current profiles for individual locking

| Profile (PR=)                               | Standard profile N1.  | Standard profile AEP10 |
|---|-----------------------|------------------------|
| <b>Profile version</b>                      | 70                    | 71                     |
| <b>With security card included</b>          | No                    | Yes                    |
| Drilling protection (AB=)                   | optional              | 0+1                    |
| Emergency device (GE=)                      | optional              | optional               |
| Locking wave (SW=)                          | -                     | -                      |
| VdS class                                   | -                     | -                      |
| RAL quality symbol                          | -                     | -                      |
| DIN class                                   | -                     | -                      |
| <b>Modular system (GBK=)</b>                | -                     | -                      |
| <b>Additional lateral pins</b>              | -                     | -                      |
| <b>Factory-keyed profile/Client profile</b> | Factory-keyed profile | Factory-keyed profile  |
| <b>Key head shape</b>                       | Square                | Square                 |



ASSA ABLOY  
Sicherheitstechnik GmbH  
Goerzallee 299  
14167 Berlin  
berlin@assaabloy.de  
Tel. +4930 8106-0  
Fax +4930 8106-26 00  
www.assaabloy.de

ASSA ABLOY, the global leader  
in door opening solutions