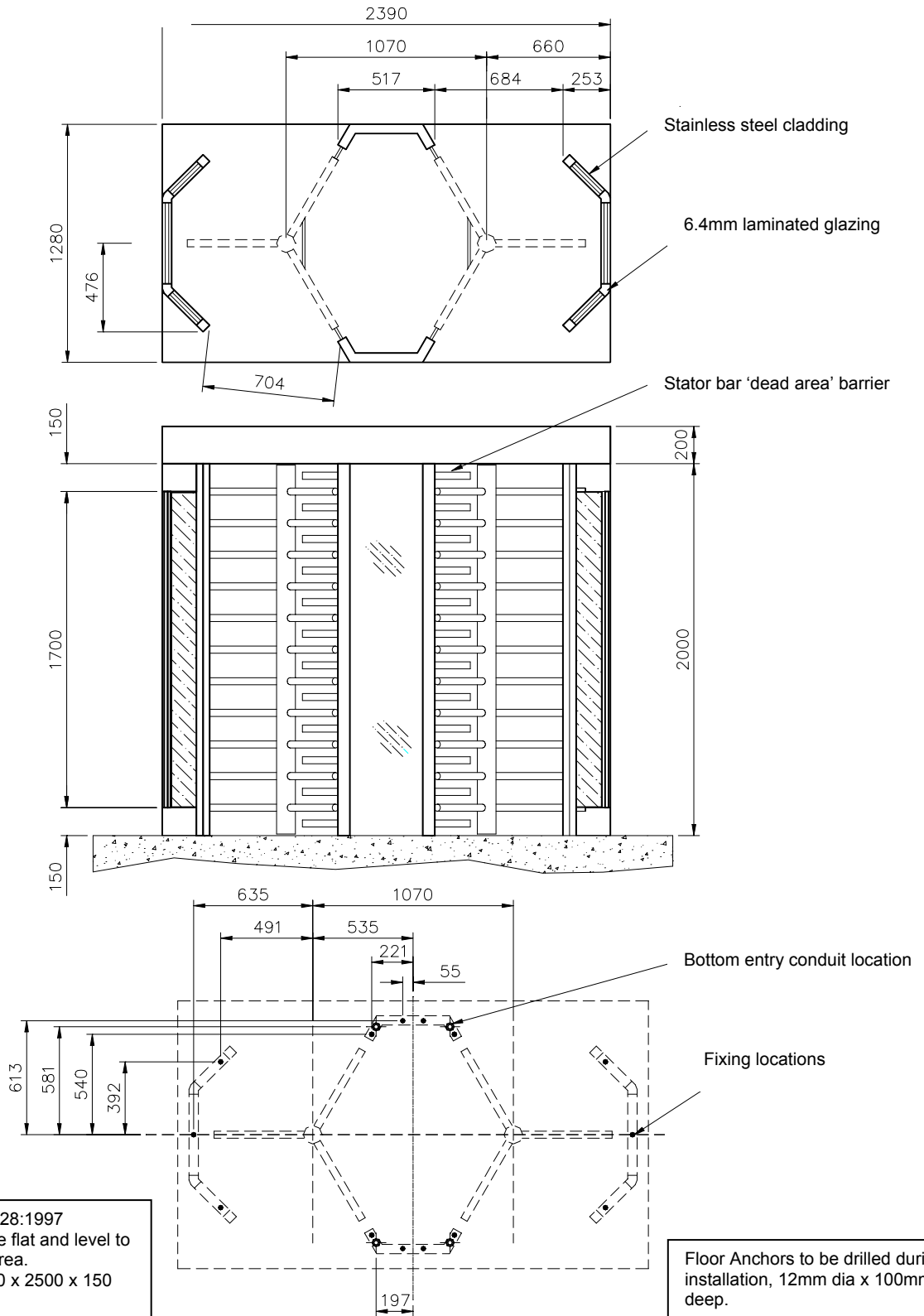


Site Preparation ClearSec GD120

(Shown with straight bar rotor)



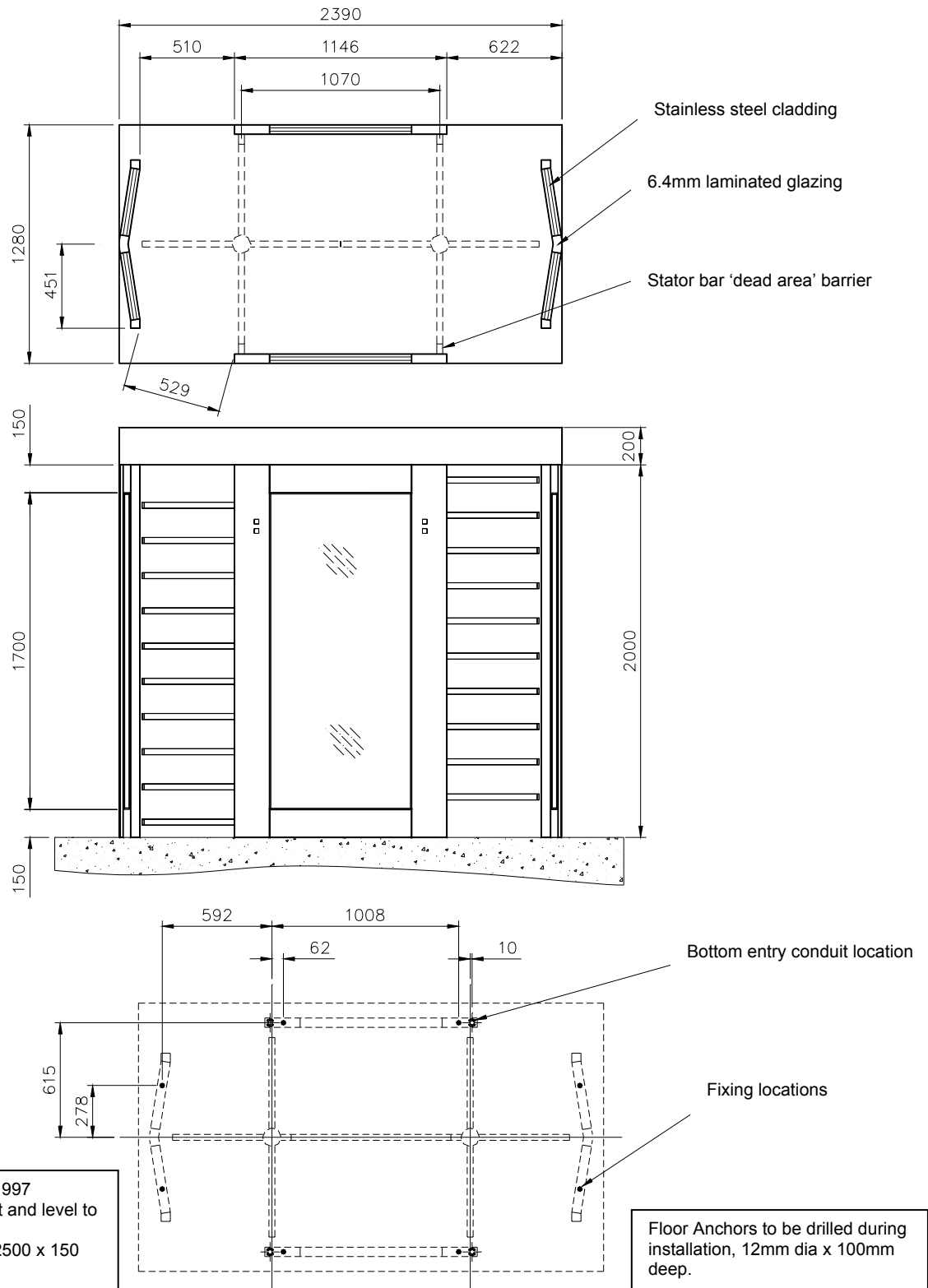
Concrete Base to BS 5328:1997 specification. Base to be flat and level to +/- 5mm over footprint area. Dimensions to be > 1450 x 2500 x 150 deep min.

Floor Anchors to be drilled during installation, 12mm dia x 100mm deep.

- IMPORTANT**
- Any horizontal pipe or conduit runs below the ClearSec must be at least 140mm below FFL.
 - It is the customers responsibility to ensure the structural integrity and strength of the installation location.
 - 200mm clear clearance is needed above the ClearSec for service activities.

Site Preparation ClearSec GD90

(Shown with straight bar rotor)



Concrete Base to BS 5328:1997 specification. Base to be flat and level to +/- 5mm over footprint area. Dimensions to be > 1450 x 2500 x 150 deep min.

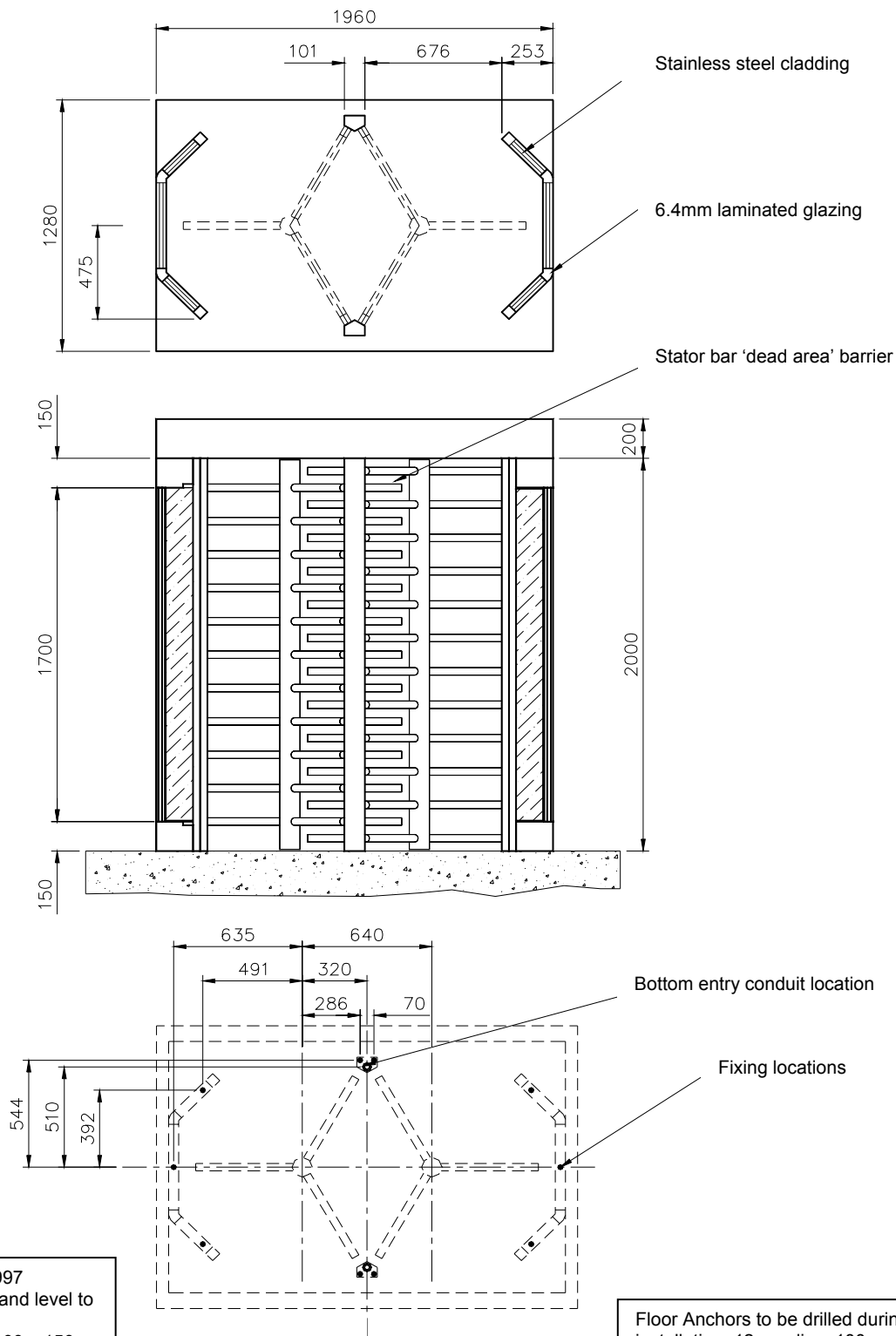
Floor Anchors to be drilled during installation, 12mm dia x 100mm deep.

IMPORTANT

- Any horizontal pipe or conduit runs below the ClearSec must be at least 140mm below FFL.
- It is the customers responsibility to ensure the structural integrity and strength of the installation location.
 - 200mm clear clearance is needed above the ClearSec for service activities.

Site Preparation ClearSec GD120I

(Shown with straight bar rotor)



Concrete Base to BS 5328:1997 specification. Base to be flat and level to +/- 5mm over footprint area. Dimensions to be > 1450 x 2100 x 150 deep min.

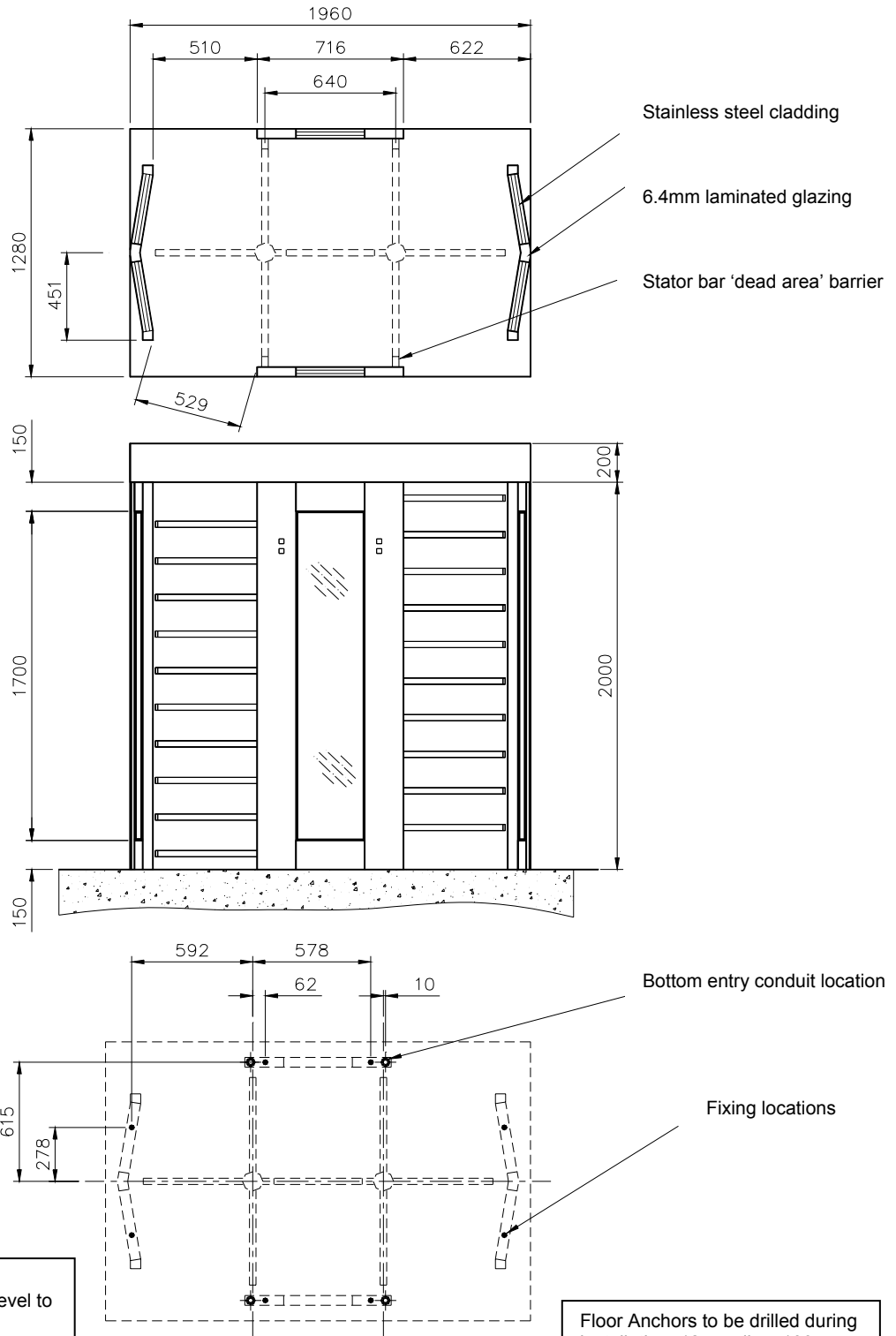
Floor Anchors to be drilled during installation, 12mm dia x 100mm deep.

IMPORTANT

- Any horizontal pipe or conduit runs below the ClearSec must be at least 140mm below FFL.
- It is the customers responsibility to ensure the structural integrity and strength of the installation location.
 - 200mm clear clearance is needed above the ClearSec for service activities.

Site Preparation ClearSec GD90I

(Shown with straight bar rotor)



Concrete Base to BS 5328:1997 specification. Base to be flat and level to +/- 5mm over footprint area. Dimensions to be > 1450 x 2100 x 150 deep min.

Floor Anchors to be drilled during installation, 12mm dia x 100mm deep.

IMPORTANT

- Any horizontal pipe or conduit runs below the ClearSec must be at least 140mm below FFL.
- It is the customers responsibility to ensure the structural integrity and strength of the installation location.
 - 200mm clear clearance is needed above the ClearSec for service activities.