

## Rapid Eye™ Report

### REPORTING SOFTWARE FOR RAPID EYE™ DIGITAL VIDEO RECORDERS

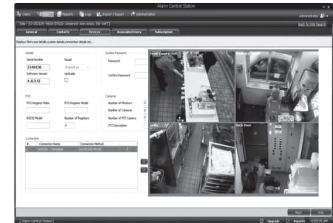
Rapid Eye™ Report is Honeywell's automation and reporting software solution for Rapid Eye DVRs. Rapid Eye Report is part of Honeywell's Managed Services offering and enables central station operators to provide additional recurring monthly revenue services. It offers a true enterprise solution for medium and large companies requiring analysis of multiple Rapid Eye DVRs and the cameras attached to them across multiple locations via LAN/WAN, DSL or even simple telephone line (POTS). Rapid Eye Report helps central station operators and dealers secure additional revenue by providing daily task automation, giving easy access to DVRs on multiple sites, and performing a health check of customers' video systems.

#### Market Opportunities

Rapid Eye Report is ideal for alarm monitoring companies currently using Rapid Eye Remote Admin and Remote View applications. Automated functionality enables Rapid Eye Report to generate reports and daily summaries. The exception reports are helpful to pinpoint suspicious activity such as back door openings, the opening of a door of a safe, or similar activities. These reports can be assigned to multiple sites and scheduled to run daily, weekly or monthly. The report creation wizard guides the end user through setting the necessary parameters for creating the query and saving the report for later use or for association with different sites.

#### Features

- Automated report generation
- DVR health check
- Camera health check
- Back door reports
- Automated multi-site firmware upgrades
- Automatic report distribution
- Import of data from Outlook and accounting system via text file - Rapid Eye Database imported directly
- Export site data to external database
- Synchronization of multiple Rapid Eye databases



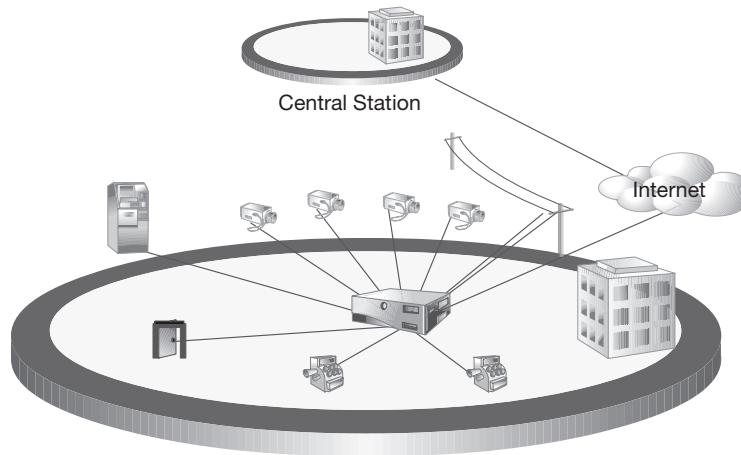
## SPECIFICATIONS

System Requirements	
Operating System	Windows® XP SP2 and Windows Server 2003 SP2
Computer/Processor	1.2 GHz or higher, Pentium IV – compatible CPU
Memory	At least 512 MB of available RAM, more memory generally improves responsiveness and volume handling capacity
Hard Disk	80 GB or higher (size storage based on the number of sites and frequency of generation and timeframe of retention of the reports)
Connection	10/100 Ethernet LAN, WAN, DSL, modem
System Configuration	
Data/Report Storage	Local machine hard drive, network drive or network share, NAS etc.
Remote Access	LAN/WAN, DSL or POTS, if equipped with modem
Connectivity	Multiple Rapid Eye sites may be connected and configured from one central database

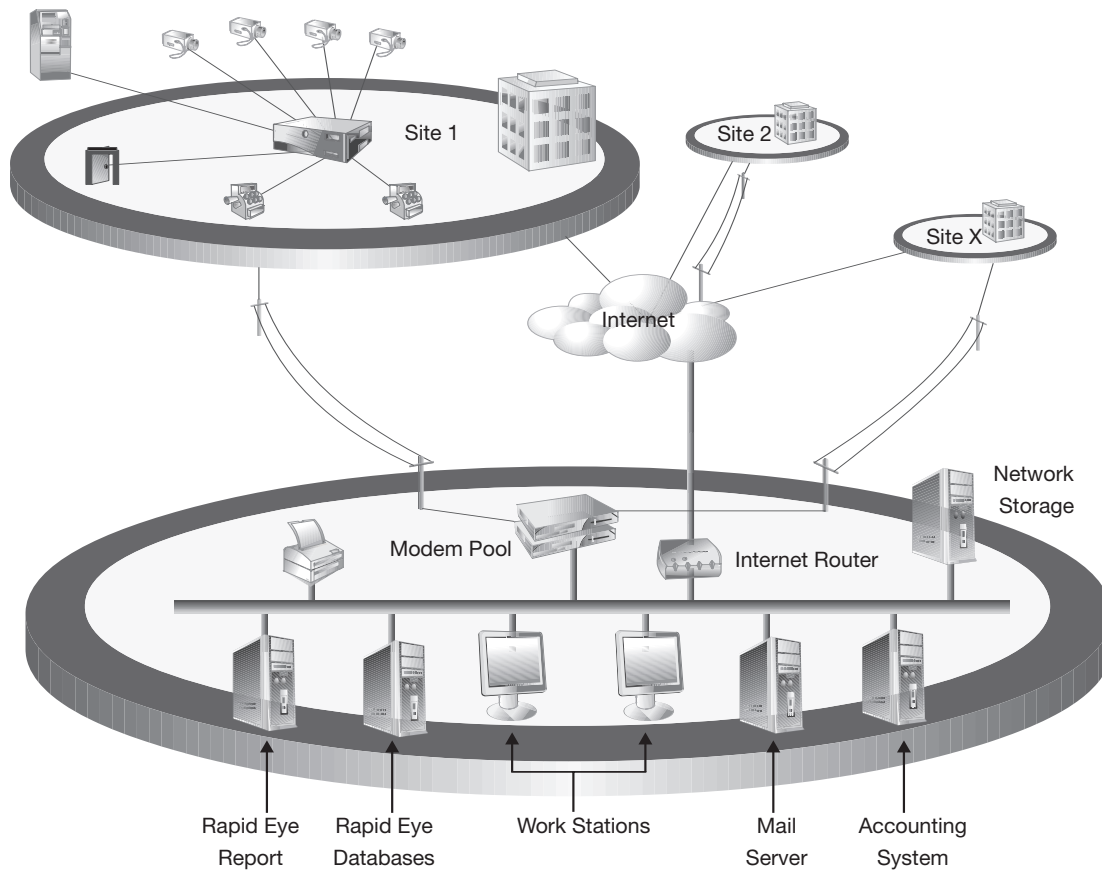
System Compatibility	
Digital Video Recorders	
Rapid Eye™ Multi-Media DSP version 7 and later	
Rapid Eye™ Multi-Media LT version 4 and later	
Rapid Eye™ Multi-Media version 4 and later	
Multi-site Firmware Upgrade Compatibility	
Rapid Eye™ Multi-Media version 6 to version 7 – firmware upgrades	
Rapid Eye™ Multi-Media version 7.xx to version 7.xy – firmware upgrades	
Database Compatibility	
Contact Management	Import tab separated text file from Outlook, Lotus Notes, etc.
Accounting	Import tab separated text file
User Rights	Rapid Eye – Import and Export for full database synchronization

## SYSTEM DIAGRAM

### Typical Single Site



### Central Station with Multi-Site Setup



# Rapid Eye™ Report

www.honeywellvideo.com

## ORDERING INFORMATION

Ordering	
HRER10	Software license to access up to 10 Rapid Eye
HRER25	Software license to access up to 25 Rapid Eye
HRER50	Software license to access up to 50 Rapid Eye
HRER100	Software license to access up to 100 Rapid Eye
HRER250	Software license to access up to 250 Rapid Eye
HRER500	Software license to access up to 500 Rapid Eye
HRERENT	Software license to access over 500 Rapid Eye
HRER10M-09*	Software maintenance agreement fees for HRER10 for year 2009
HRER25M-09*	Software maintenance agreement fees for HRER25 for year 2009
HRER50M-09*	Software maintenance agreement fees for HRER50 for year 2009
HRER100M-09*	Software maintenance agreement fees for HRER100 for year 2009
HRER250M-09*	Software maintenance agreement fees for HRER250 for year 2009
HRER500M-09*	Software maintenance agreement fees for HRER500 for year 2009
HRERENTM-09*	Software maintenance agreement fees for HRERENT for year 2009

\* Includes software upgrades and fixes for one year. First year support covers 15 months to allow for delivery, setup, etc. Subsequent year covers 12-months period.

### Honeywell Security & Data Collection

Honeywell  
2700 Blankenbaker Pkwy, Suite 150  
Louisville, KY 40299  
1.800.796.CCTV (2288)  
www.honeywell.com



L/RERPRTD/D  
September 2008  
© 2008 Honeywell International Inc.