



# brief summary

SK6	WSW
6	6 spring-loaded pin tumblers and 5 lateral pins
nickel silver , in several parts	nickel silver, in several parts
with profile ...NP, optional	yes
Carbide pins	Carbide pins

## Profiles for individual lockings

FP04	1RP04	...NP	W10
79	76	72	67
Yes	Yes	Yes	Yes
2	2	2	2
BS	BS	BS	BS
-	-	-	-
Class B	Class B+	Class B	Class B+
Yes	Yes	Yes	Yes
Class 82 <sup>1</sup>	Class 82 <sup>1</sup>	Class 82 <sup>1</sup>	Class 82 <sup>1</sup>
-	-	optional	Yes
-	2+2	2+2	-
Factory-keyed profile	Factory-keyed profile	Customer profile	Factory-keyed profile
square	square	square (colour clip optional)	oval

## Profiles for locking systems

Vector-Profile	Multiprofile	Locking wave undercut	-
15 (security level 1)	14	11	-
16 (security level 2)			-
Yes	Yes	Yes	-
GH, H, KHZ, Z, ZUE	GH, H, KHZ, Z, ZUE	GH, H	-
square	square with colour clip	round	-
optional	optional	optional	-
optional	optional	optional	-
-	-	Locking wave	-
pins + strip (optional with 2nd security level)	pins + strip	pins + strip	-
optional	optional	optional	-
Separate profiles general master key systems, master key systems and central locking systems	Separate profiles general master key systems, master key systems and central locking systems	Separate profiles general master key systems, master key systems and central locking systems	-
6 pin tumblers meeting DIN EN 1303 and DIN 18 252	6 spring loaded, active tumblers complying with DIN EN 1303 and/or DIN 18 252	10 spring-loaded actively operating tumblers meeting DIN EN1303 and DIN 18252	-
Paracentric key profile	Keys with combination metal and pvc grip	Paracentric key profiles with additional encoded locking wave	-
DIN EN 1303 locking security rating 6, attack resistance 0, optional drilling and extraction protection class 2	DIN EN 1303 locking security rating 6, attack resistance 0, optional drilling and extraction protection class 2	DIN EN 1303 locking security rating 6, attack resistance 0, optional drilling and extraction protection class 2	-
DIN 18 252 Class 80	DIN 18 252 Class 80	DIN 18 252 Class 80	-
DIN class 82 certification with drilling protection optional, extraction protection on request	DIN class 82 certification with drilling protection optional, extraction protection on request	DIN class 82 certification with drilling protection optional, extraction protection on request	-
VdS class B approval with drilling protection optional, extraction protection on request	VdS class B approval with drilling protection optional, extraction protection on request	VdS class B approval with drilling protection optional, extraction protection on request	-

# System and profile overview for new individual lockings

## System P0

### Standard profile N1.

Factory-keyed profile



#### Product description

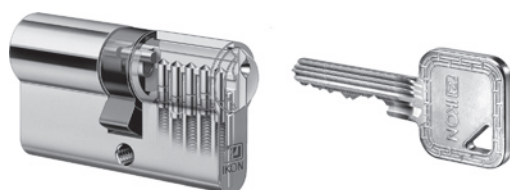
- 5 spring-loaded pin tumblers = protection against unauthorised opening
- Paracentric key profile = unlocking security
- DIN class 70
- Double-sided locking option = emergency key function
- Key with square metal head

Tried and tested IKON profile, P0 system with 5 active spring loaded pin tumblers. The N1 profile is a paracentric profile design and provides solid unlocking protection when combined with special pin combinations.

## System P0

### Standard profile AEP10

Factory-keyed profile



#### Product description

- 5 spring-loaded pin tumblers = protection against unauthorised opening
- Paracentric key profile = unlocking security
- Protected key profile with security card = Key security
- Drilling protection class 0+1 (AB=0+1)
- High degree of protection against lock picking due to special profile design
- Double-sided locking option = emergency key function
- DIN class 70
- Key with square metal head

Tried and tested premium IKON System P0 profile with 5 active spring-loaded pin tumblers. Profile AEP10 (Arcus Profile) is a patented paracentric profile which offers a high degree of protection against forced entry and lock picking as well as unauthorised unlocking, scanning security and protection against key copying due to 2 profile sections positioned offset to one another.



# System and profile overview for new individual lockings

## System TK5

### Standard profile N2.

Factory-keyed profile



Tried and tested IKON profile in the traditional TK5 profile with 5 active spring-loaded pin tumblers. Profile N2 is a paracentric profile which offers reliable protection against forced entry and lock picking in conjunction with special pin combinations.

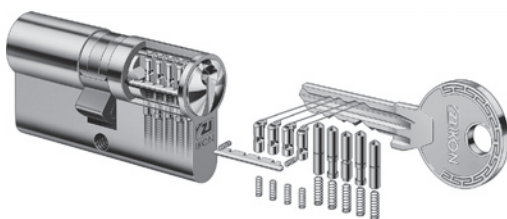
#### Product description

- 5 spring-loaded pin tumblers = protection against unauthorised opening
- Paracentric key profile = unlocking security
- Optional drilling protection class 1 (AB=1) or 2 (AB=2)
- DIN class 70
- Double-sided locking option = emergency key function
- Key with round metal head

## System TK5

### Locking wave profile 2PE

Factory-keyed profile



Based on the standard profile an additional coding, known as the locking wave, has been milled along the key shaft. This code is scanned inside the cylinder by special spring loaded lateral tumblers. Missing or incorrect laterally codes on the key shaft inhibit the locking process when further locking attempts are made. The encoded locking wave meets the requirements for copy protection, protection against unauthorised opening to a high degree.

#### Product description

- 9 (5+4) spring-loaded pin tumblers = protection against unauthorised opening
- Paracentric key profile with additional blocking wave coding = unlocking security
- Protected key profile with security card = Key security
- Certification and identification meeting VdS B+
- Certification and marking in compliance with DIN 18252, class 82\* and RAL
- Drilling protection class 2 (AB=2)
- Double-sided locking option (GE=BS) = Emergency-key function
- Additional locking wave, pin combination and additional locking wave coding provide a very high degree of protection against lock picking and "key bumping"
- Key with round metal head
- Recommended by the police and insurance companies

\* Cylinders meeting impact resistance class 1 and 2 do not have to be equipped with extraction protection if they are intended to be used in conjunction with security fitting with extraction protection.



# System and profile overview for new individual lockings

## System SK6

### Flat profile Vector FP04

Factory-keyed profile



Premium-quality IKON profile, special class SK6 with 6 active spring-loaded pin tumblers. This innovative profile is based on a new, long-term patent that was developed especially to deter current and common opening techniques, which it impedes significantly. The FP04 profile is a paracentric profile design offering DIN, VdS and RAL certification in its standard version.

## Product description

- 6 spring-loaded pin tumblers = protection against unauthorised opening
- Paracentric key profile = unlocking security
- Protected key profile with security card = Key security
- Certification and marking in compliance with VdS B
- Drilling protection class 2 (AB=2)
- High degree of protection against lock picking as a result of special profile features and combination of pins
- Double-sided locking option (GE=BS) = Emergency-key function
- Key with square metal head
- Recommended by the police and insurance companies



## System SK6

### Blocking rib profile Vector 1RP04

Factory-keyed profile



Premium IKON special SK6 blocking rib profile with 6 active spring-loaded pin tumblers. This profile is based on a new, long-term patent which has been developed especially to counteract current and established intrusion techniques, which it impedes to a very high degree. Profile 1RP04 is a paracentric profile. The so-called locking rib are located laterally on the key shaft. These blocking ribs are scanned inside the cylinder by blocking rib pins resulting in a particularly high degree of protection against unauthorised opening, forced entry and lock picking, scanning security as well as increased key copy protection.

## Product description

- 6 (+2) spring-loaded pin tumblers = protection against unauthorised unlocking
- Paracentric blocking rib key profile = unlocking security
- Protected key profile with security card = Key security
- Certification and identification meeting VdS B+
- Certification and marking in compliance with DIN 18252, class 82\* and RAL
- Drilling protection class 2 (AB=2)
- Double-sided locking option (GE=BS) = Emergency-key function
- High level of protection against lock picking as a result of special profile design, combination of pins and additional locking rib detection
- Key with square metal head
- Recommended by the police and insurance companies

\* Cylinders meeting impact resistance class 1 and 2 do not have to be equipped with extraction protection if they are intended to be used in conjunction with security fitting with extraction protection.



# System and profile overview for new individual lockings

## System SK6

### Blocking cam profile Vector ...NP

Client profile



High-quality IKON blocking cam profile, special class SK6 with 6 active spring-loaded pin tumblers. This innovative profile is based on a new, long-term patent that was developed especially to deter current and common opening techniques, which it impedes significantly. The ...NP profile is a paracentric profile design offering DIN, VdS and RAL certification in its standard version. The so-called blocking cams are arranged on both long sides of the key. These blocking cams are scanned in the locking cylinder by blocking cam or labyrinth pins resulting in particularly high unlocking, scanning and tamper-proofing security and enhanced key duplication protection.

**...NP-client profile –  
for further information please contact us.**

## Product description

- 6 (2+2) spring-loaded pin tumblers = protection against unauthorised opening
- Paracentric blocking-cam key-profile = unlocking security
- Protected key profile with security card = Key security
- Certification and marking in compliance with VdS B
- Certification and marking in compliance with DIN 18252, class 82\* and RAL
- Drilling protection class 2 (AB=2)
- Double-sided locking option (GE=BS) = Emergency-key function
- High level of protection against lock picking as a result of special profile design, combination of pins and additional locking rib detection
- Key with optional PVC clip (available colours: blue, yellow, grey, green, red and black)
- Key with square metal head
- Can be embossed with client logo
- Recommended by the police and insurance companies

### **New! Optionally available as modular system**

\* Cylinders meeting impact resistance class 1 and 2 do not have to be equipped with extraction protection if they are intended to be used in conjunction with security fitting with extraction protection.

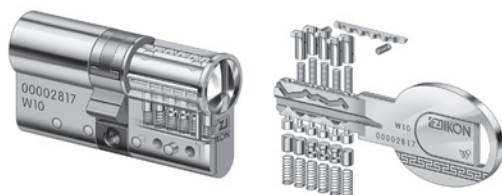


# System and profile overview for new individual lockings

## System WSW

### Reversible key profile W10

Factory-keyed profile



IKON Premium-quality reversible key profile with 11 active spring-loaded pin tumblers. Scanning the reversible key system is carried out by 6 pin tumblers arranged centrally in the locking cylinder as well as 5 finger pins arranged on the sides in the locking cylinder core. The undercut within the key profile ensures that an extremely complex key shape is achieved which increases key duplication protection. The requirement of key duplication protection and protection against unauthorised unlocking is met to a high degree by the W10 reversible key profile. The W10 profile offers DIN, VdS and RAL certification in its standard version and has a modular structure for quick and simple length adjustment.

## Product description

- 11 (6+5) spring-loaded pin tumblers = protection against unauthorised opening
- Key profile on both sides with undercut and shaft coding
- Scanning with five additional spring-loaded shaft scanning pins (finger pins) = unlocking security
- Protected key profile with security card = Key security
- Certification and marking in compliance with VdS B as standard
- Certification and marking in compliance with DIN class 82\* and RAL as standard
- Drilling protection class 2 (AB=2)
- Double-sided locking option (GE=BS) = Emergency-key function
- Modular system for quick and simple length adjustment
- Key with handy, oval key head
- Recommended by the police and insurance companies

\* Cylinders meeting impact resistance class 1 and 2 do not have to be equipped with extraction protection if they are intended to be used in conjunction with security fitting with extraction protection.



## Reversible key function

The key always fits, regardless in which direction it is cut into the cylinder



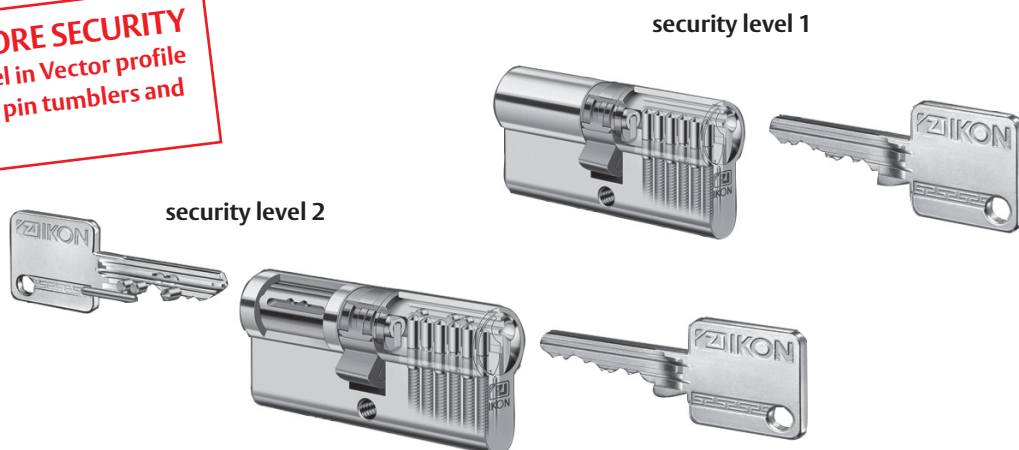
# System and profile overview for new individual lockings

## System SK6

### Vector profile

Suitable for systems GH, H, KHZ, Z, ZUE

**FOR EVEN MORE SECURITY**  
2nd security level in Vector profile  
(with additional pin tumblers and  
security bar)



The profile pattern of the key is located parallel to the key's spine. The paired profile components are located horizontally and diagonally opposite one another. Compared to traditional key profiles this specific configuration of profile features significantly increases tamper-proofing and provides a very high degree of protection against unauthorised opening, forced entry and lock picking as well as scanning security. The principle of the second security level lies in an additional code that is scanned by additional blocking components inside the cylinder. Missing or incorrect coding on the key will block the locking procedure during locking attempts.

#### Standard features include:

- 6 (+3) spring-loaded tumblers meeting DIN EN 1303 and DIN 18 252 = protection against unauthorised opening
- Paracentric key profile = protection against forced entry and lock picking
- Optional with lateral incisions along the key shaft in the second security level
- Protected key profile with security card = key security
- DIN EN1303 locking security class 6
- DIN EN1303 attack resistance class 0, with optional class 2 extraction protection
- Optional DIN class 82\* certification for drilling protection, optional extraction protection
- Optional VdS class B' certification for drilling protection, optional extraction protection
- Very high level of protection against lock picking and 'key bumping' due to special profile design and pin combination
- Optional second scanning level for increased security requirements
- Keys with square non-slip metal grip

<sup>1</sup> After verification and consultation with ASSA ABLOY Sicherheitstechnik GmbH

\* Cylinders meeting impact resistance class 1 and 2 do not have to be equipped with extraction protection if they are intended to be used in conjunction with security fitting with extraction protection.



# System and profile overview for new individual lockings

## System SK6

### Multiprofile

Suitable for system types GH, H, KHZ, Z, ZUE



Premium-quality profile, special class SK6 with 6 active spring loaded pin tumblers. Lunated undercuts are milled into one or both long sides of the key. This coding is scanned in the locking cylinder by 2 special blocking slide elements (without springs). Missing undercuts on the key lead to blocking of the opening procedure. This type of lateral key profile scanning provides a considerably higher degree of protection against unauthorised opening and unlocking security when compared to conventional key profiles.

## Product description

- 6 (+2) spring loaded, active pin tumblers complying with DIN EN 1303 and/or DIN 18 252 = protection against unauthorised opening
- Paracentric key profiles with lunated undercuts, scanned by 2 blocking slide elements = unlocking security
- Protected key profile with security card = Key security
- DIN EN 1303 lock security class 6
- DIN EN 1303 intrusion resistance class 0, optionally available with drilling protection and extraction protection class 2
- Optional DIN testing, class 82, with drilling protection, optionally available with extraction protection
- Optional VdS approval, class B<sup>1</sup>, with drilling protection, optionally available with extraction protection
- Special profile design, pin combination and additional side scanning provide a very high degree of protection against lock picking and 'key bumping'
- Key with combined metal/plastic head<sup>2</sup>, optionally available in the colours: black (standard colour), red, blue, yellow, green and grey

\* Cylinders meeting impact resistance class 1 and 2 do not have to be equipped with extraction protection if they are intended to be used

in conjunction with security fitting with extraction protection.

<sup>1</sup> After verification and consultation with ASSA ABLOY Sicherheitstechnik GmbH

<sup>2</sup> metal grip is not available

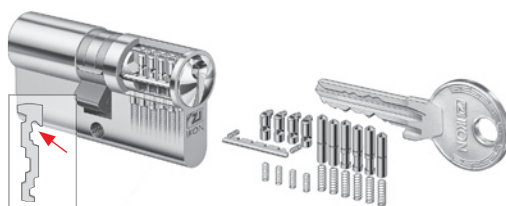


# System and profile overview for new individual lockings

## System SK6

### Locking wave / undercut

Suitable for system types GH and H



IKON Premium-quality profile, special class SK6 with 10 active spring-loaded pin tumblers. Additional coding, known as the locking wave, has been milled along the key shaft. This code is scanned inside the cylinder by special spring loaded tumblers. Missing or incorrect codes located laterally on the key shaft inhibit the locking process when further locking attempts are made. The key profile also contains an undercut, which adds to the complexity of its shape and enhances copy protection. The locking wave meets the requirements for copy protection, protection against unauthorised opening, forced entry and lock picking to a high degree.

## Product description

- 10 (6+4) spring-loaded, active tumblers complying with DIN EN 1303 and/or DIN 18 252 = protection against unauthorised opening
- Paracentric key profiles with additional locking wave coding and undercut = unlocking security
- Protected key profile with security card = Key security
- DIN EN 1303 lock security class 6
- DIN EN 1303 intrusion resistance class 0, optionally available with drilling protection and extraction protection class 2
- DIN 18 252 class 81
- Optional DIN testing, class 82, with drilling protection, optionally available with extraction protection
- Optional Vds approval, class B, with drilling protection, optionally available with extraction protection
- Profiles for general master key system and master key system
- Additional locking wave, pin combination and additional locking wave coding provide a very high degree of protection against lock picking and "key bumping"
- Key with round metal head

